

Kenton County Airport Board

External Passenger Safety Meeting Minutes

October 15, 2014

Facilitator: Brian Cobb

Scribe: Nancy Hill

I. Call to order

Brian Cobb called to order the regular meeting of the Passenger Safety Subcommittee at 9:40 a.m. on October 15, 2014 in the KCAB Board Room.

II. Roll call

ATA Security Meeting Sign In Sheet

October 15, 2014

Name (Please Print)	Airline	Email Address (Only if not previously given)
David Cameron	KCAB	dcameron@cvgairport.com
Brian Belcher	TSA / FAMS	Brian.C.Belcher@DLS.TSA.DHS.GOV
Edward Woods	DELTA AIRLINE JETS	
Mark Duncanson	TSA FAMS	
Nancy Hill	KCAB	
Brian Cobb	KCAB	bcobb@cvgairport.com
Jacqueline	US Airways	jacqueline@US Airways.com
Will Smith	ENVY	william.H.Smith@CBG.CA
BARRY ERB	DELTA	barry.erb@delta.com
Stephen Saunders	KCAB	ssaunders@cvgairport.com
WENDI ORLANDO	KCAB	
Mark Priede	FEDEX	
GREG KUHN	DELTA	
TIM ARDEN	TSA	
Ray Williams	TSA	
SCOTT SCHWARTZ	KCAB - Police	
Ryan Seibert	Trego Dugan	
Beth Burks	CBP	
STEVEN THOMPSON	CBP	Steven.C.Thompson@cbp.dhs.gov
Tim Zais	KCAB	tim@cvgairport.com
Andrew McGinnis	KCAB	amcginnis@cvgairport.com
Chuck Swalley	DELTA	

III. Review/Discuss Open Items from Action Item List

- a) Reminded group of the scope/purpose of the meeting referring to the charter document previously shared.
- b) Shared examples of the internal passenger safety action item list for the purposes of helping the group understand implications/suggestions/issues that could affect the passenger travel ribbon.

IV. New business

Meeting yielded to Ebola briefing. This covered awareness issues, airport/community protocols and carrier specific precautions that are underway.

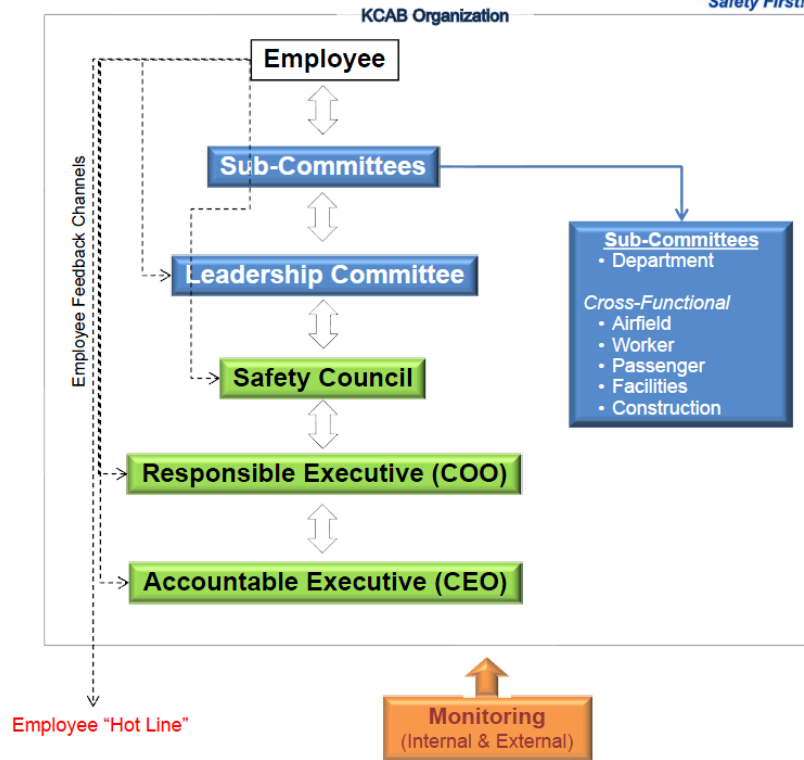
V. Adjournment

Brian Cobb adjourned the meeting at 9:45 a.m.

Minutes submitted by: Nancy Hill

Minutes approved by: Brian Cobb

KCAB Safety Structure



Passenger Safety Committee Charter

Safety is a shared responsibility and all are accountable for its promotion. Communication and staff participation are the primary keys of success. Success is attainable by effectively mitigating risk and providing a safe facility for airport staff, tenants, and passengers.

Mission

The Passenger Safety Committee will align safety with the functions of the Airport, its tenants, passengers, and contractors. The committee will be comprised of multiple department representatives responsible for identifying passenger related safety concerns in and around all Airport facilities, identifying safety trends and will take corrective action, as needed. Action items will be tracked to ensure proper assignment and completion in a timely manner to mitigate risk. The Passenger Safety Committee will support the Airfield Safety Committee, Construction Safety Committee, the Worker Safety Committee, and the Facility Safety Committee creating overlap to promote effective safety communication.

Primary Objectives

- Identify actionable passenger related hazards such as:
 - Trips/slips/fall hazards
 - Emergency Evacuation Conditions
 - Bio-hazards response
 - Prevention and Mitigation of Disease Transmission
- Hazards identified through multiple channels to include, but not limited to:
 - KCAB post-event alerts/notifications of passenger-related events,
 - Written, phone, email, or other means of communication to the sub-committee member(s) from internal staff, other sub-committees, and external key-stakeholders,
 - Committee-level meetings (noted in meeting minutes and/or action list).
- Document and trend available passenger-related hazard/risk data
- Propose solutions or preventative measures to the KCAB Safety Council
- Document resolutions and/or actions underway towards resolution
- Coordinate passenger-related corrective and/or procedural communications among key stakeholders
- Summarize sub-committee progress for the KCAB Safety's Accountable and/or Responsible Executive upon request

Secondary Objectives

- Offer assistance and representation on other safety sub-committees.
- Assist the Safety Council and other sub-committees with procedural communications among key stakeholders.

Key Participants:

Internal

- | | |
|---------------------------------------|---|
| ▪ Facilities Maintenance | ▪ Customer Service: Terminal Operations & Relations |
| ▪ Commercial and Business Development | ▪ Police |
| ▪ Planning and Engineering | ▪ ARFF |

External

- | | |
|------------|-------|
| ▪ Airlines | ▪ TSA |
|------------|-------|

Other Key Participants/ Subject Matter Experts invited, as needed.