



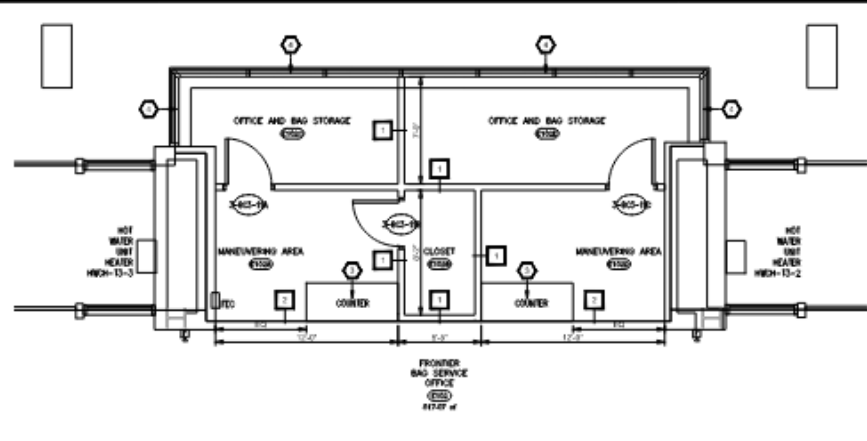
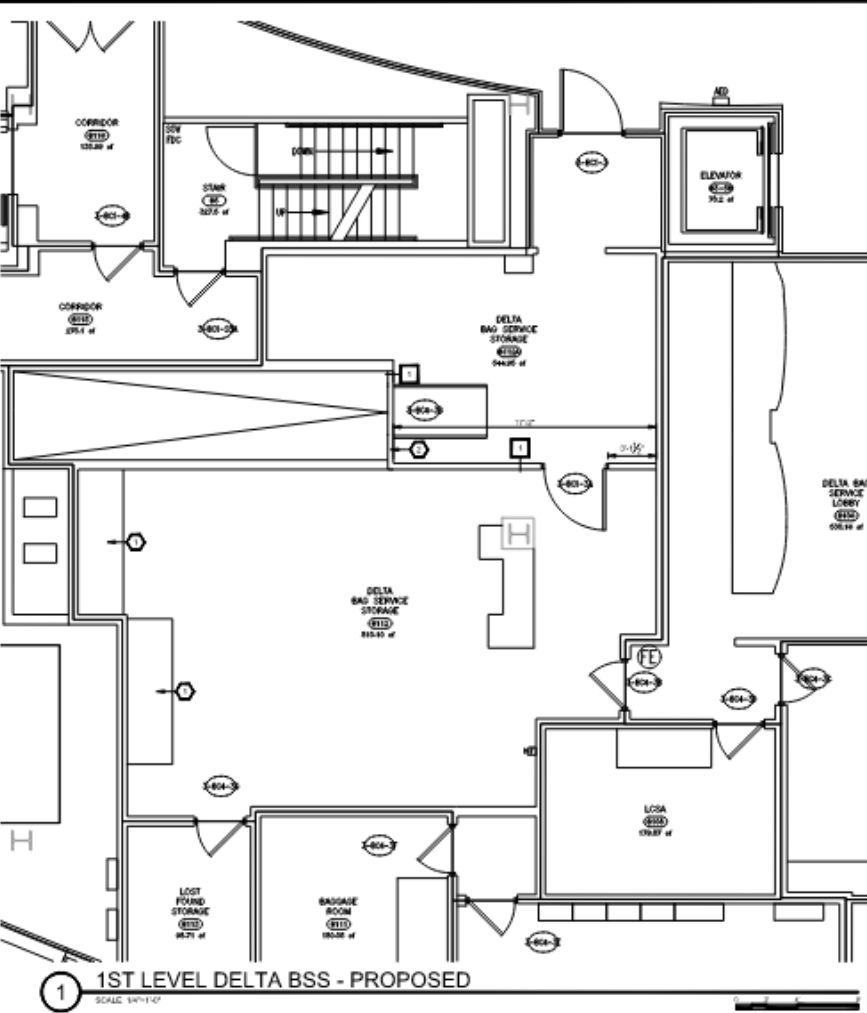
BSO / Delta wall project

Airport Operational Impact Notice

PROJECT	Location: Passenger Terminal Facilities	Project Start Date: 5/27/2024 12:00am
	Sublocation: Bag Claim	Project End Date: 08/15/2024 12:00pm
SCOPE	Work Order:	
	Century Construction will be building a new BSO at baggage claim. Also, they will be building a new wall in the Delta BSO.	
KCAB CONTACTS	Primary: Alonzo Allen	Secondary:
	Primary Cell: 859-652-4510	Secondary Cell:
	Primary Email: aallen@cvgairport.com	Secondary Email:
CONTRACTOR	Company: Century Construction	Company Phone:
	Project Manager: Robbie	Cell:
	Subcontractors:	

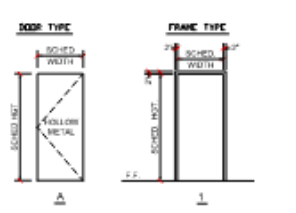
For immediate concerns regarding this notice, please contact the Airport Operations Center at 859-767-7777

FOR EMERGENCIES DIAL 911

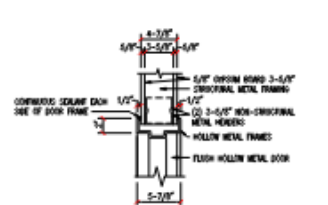


- SHEET KEYNOTES:**
1. PROVIDE NEW PLASTIC LAMINATE SOLID SURFACE COUNTER W/ 4" SPALL.
 2. ADD METAL FRAMING AND SPRING FROM COMBINED BELLY MEMBER TO CEILING APPROXIMATELY 20" TALL.
 3. PROVIDE NEW MILLWORK COORDINATE WITH CVG STANDARDS. REFER TO SHEET A011.
 4. PROVIDE FINISHED DETAIL TO MILLWORK TO MATCH EXISTING CORRIDORS.

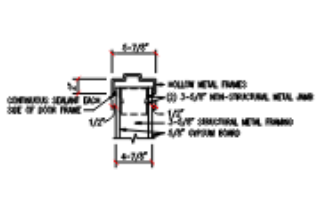
- WALL TYPE**
1. 5/8" GYPSUM BOARD ON BOTH SIDES OF 3-5/8" STEEL STUDS AT 16" O.C. TO 8'-0" TO EXTEND ABOVE NEW CEILINGLINE TO STRUCTURE AS REQUIRED.
 2. (OPTION) 5/8" GYPSUM BOARD ON BOTH SIDES OF 3-5/8" STEEL STUDS AT 16" O.C. TO EXTEND ABOVE NEW CEILING. ATTACH TO STRUCTURE ABOVE AS REQUIRED.



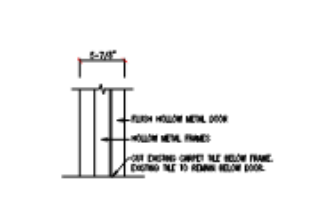
3 DETAIL - HEAD A
SCALE: 1/8"=1'-0"



4 DETAIL - JAMB A
SCALE: 1/8"=1'-0"



5 DETAIL - SILL A
SCALE: 1/8"=1'-0"



DOOR AND FRAME SCHEDULE

DOOR MARK	ROOM	TO ROOM	DOOR			FRAME			FIRE RATING LABEL	HARDWARE SET NUMBER	COMMENTS					
			WIDTH	HEIGHT	THICKNESS	DOOR MATERIAL	DOOR TYPE	FRAME MATERIAL				FRAME TYPE				
3-BC-2	WEST BAGGAGE CLAIM HALL	DELTA BSS	4'-0"	7'-0"	1 3/4"	HM	A	HM	1	A	A	A	A	---	---	EXISTING DOOR (CONSIDER FINISHING INSIDE)
3-BC-3A	DELTA BSS	DELTA BSS	4'-0"	7'-0"	1 3/4"	HM	A	HM	1	A	A	A	A	---	---	SEE SPEC FOR DOOR AND DOOR FRAME
3-BC-13A	MANUFACTURING AREA	OFFICE AND BAG STORAGE	3'-0"	7'-0"	1 3/4"	HM	A	HM	1	A	A	A	A	---	---	SEE SPEC FOR DOOR AND DOOR FRAME
3-BC-13B	MANUFACTURING AREA	CLOSET	3'-0"	7'-0"	1 3/4"	HM	A	HM	1	A	A	A	A	---	---	SEE SPEC FOR DOOR AND DOOR FRAME
3-BC-13C	MANUFACTURING AREA	OFFICE AND BAG STORAGE	3'-0"	7'-0"	1 3/4"	HM	A	HM	1	A	A	A	A	---	---	SEE SPEC FOR DOOR AND DOOR FRAME

ROOM FINISH SCHEDULE

ROOM NUMBER	ROOM NAME	AREA	FLOOR FINISH	BASE FINISH	WALLS								CEILING			COMMENTS	
					BUILDING ORIENTATION INDICATES PLAN NORTH								CEL. PG. MATERIAL	CEL. PG. FINISH	CEL. PG. HEIGHT (A.F.F.)		
					NORTH		SOUTH		EAST		WEST						
B10A	DELTA BAG SERVICE STORAGE	294.55 SF	OPT-5	HL-1	GYPSUM BOARD	PT-1	GYPSUM BOARD	PT-1	CONC.	PT-1	CONC.	PT-1	CONC.	AC-2	600 ROP	18'-0"	AWBSTRONG RED CEILING TILE
B12	DELTA BAG SERVICE STORAGE	318.10 SF	OPT-5	HL-1	GYPSUM BOARD	PT-1	CONC.	PT-1	CONC.	PT-1	CONC.	PT-1	CONC.	AC-2	600 ROP	18'-0"	AWBSTRONG RED CEILING TILE
B12A	MANUFACTURING AREA	55.54 SF	OPT-5	HL-1	GYPSUM BOARD	PT-1	CONC.	PT-1	CONC.	PT-1	CONC.	PT-1	CONC.	AC-1	600 ROP	18'-0"	SOUTH WALL FINISHES ARE AT NEW GORIT
B12B	CLOSET	43.50 SF	OPT-5	HL-1	GYPSUM BOARD	PT-1	CONC.	PT-1	CONC.	PT-1	CONC.	PT-1	CONC.	AC-1	600 ROP	18'-0"	PAINT BOTH SIDES OF SOUTH WALL
B12C	OFFICE AND BAG STORAGE	155.67 SF	OPT-5	HL-1	GYPSUM BOARD	PT-1/FL-1	CONC.	PT-1	CONC.	PT-1	CONC.	PT-1	CONC.	AC-1	600 ROP	18'-0"	WEST WALL HAVE CLEAR GYPSUM BOARD GLASS. USE PT-1 FOR GYPSUM BOARD. USE PT-1/FL-1 FOR GYPSUM BOARD GLASS.
B12D	MANUFACTURING AREA	55.54 SF	OPT-5	HL-1	GYPSUM BOARD	PT-1	CONC.	PT-1	CONC.	PT-1	CONC.	PT-1	CONC.	AC-1	600 ROP	18'-0"	SOUTH WALL FINISHES ARE AT NEW GORIT
B12E	OFFICE AND BAG STORAGE	141.83 SF	OPT-5	HL-1	GYPSUM BOARD	PT-1/FL-1	CONC.	PT-1	CONC.	PT-1	CONC.	PT-1	CONC.	AC-1	600 ROP	18'-0"	EAST WALL HAVE CLEAR GYPSUM BOARD GLASS. USE PT-1 FOR GYPSUM BOARD. USE PT-1/FL-1 FOR GYPSUM BOARD GLASS.

FINISH LEGEND

FLOORING	SYMBOL	SYMBOL	MANUFACTURER	COLOR / STYLE	FINISH
FLOORING	CARPET TILE	OPT-1	BELTON CONTRACT	BATCHMAP SELECTION - 8 TWP	1 MATR 2 1 SUPER TWP
WALLS	PAINT	PT-1	SHOW N WALLS	DAVIDS WHITE & WHITE NEUTRAL PAINT	COOKWELL
CEILING	FLUORESCENT	FL-1	JOHNCOFFRE	400 CHROMAL	4" COVE PROFILE
CEILING	GLASS	GL-1	UNO	MILKYWAY WHITE BRUSH GRIS	24" X 24" TROUSERS
CEILING	GLASS	GL-2	AMATECH	802	24" X 24"
CEILING	GLASS	GL-3	PIE	FRONTIER SHERWIN WILLIAMS - FINE EXTRA WHITE	

engineering | architecture | geospatial
www.gwinc.com

DATE	REVISION	BY	AUTH.

KENTON COUNTY AIRPORT BOARD

CVG TERMINAL FRONTIER & DELTA BSO

CVG TERMINAL FIRST LEVEL PLANS - PROPOSED

PROJECT NO: 2023-06
DATE: 4/27/2024
DRAWN BY: [Signature]
SCALE: AS NOTED

CVG
CINCINNATI/NORTHERN KENTUCKY INTERNATIONAL AIRPORT

CVG TERMINAL FRONTIER & DELTA BSO
CVG TERMINAL FIRST LEVEL PLANS - PROPOSED
SHEET NO: A103

ISSUED FOR CONSTRUCTION

ID	Task Mode	Task Name	Duration	Start	Finish	Gantt Chart																											
						June 2024														July 2024							August 2024						
1						<div style="display: flex; justify-content: space-between;"> <div style="width: 30%;"> <p>Frontier</p> <ul style="list-style-type: none"> Mobilization / Barricades Metal Framing & Door Frames MEP Rough-In Hanging Finish Paint Celing ACT Doors & Hardware MEP Devices Millwork Window Tinting Final Clean </div> <div style="width: 65%;"> </div> </div>																											
2		Frontier	1 day	Thu 5/16/24	Thu 5/16/24																												
3		Mobilization / Barricades	1 day	Mon 5/27/24	Mon 5/27/24																												
4		Metal Framing & Door Frames	3 days	Mon 5/27/24	Wed 5/29/24																												
5		MEP Rough-In	3 days	Mon 6/3/24	Wed 6/5/24																												
6		Hanging	5 days	Mon 6/10/24	Fri 6/14/24																												
7		Finish	4 days	Mon 6/10/24	Thu 6/13/24																												
8		Paint	2 days	Thu 6/13/24	Fri 6/14/24																												
9		Celing ACT	2 days	Mon 6/17/24	Tue 6/18/24																												
10		Doors & Hardware	2 days	Wed 6/19/24	Thu 6/20/24																												
11		MEP Devices	2 days	Wed 6/19/24	Thu 6/20/24																												
12		Millwork	1 day	Mon 6/24/24	Mon 6/24/24																												
13		Window Tinting	1 day	Tue 6/25/24	Tue 6/25/24																												
14		Final Clean	1 day	Wed 6/26/24	Wed 6/26/24																												
15																																	
16		Delta	1 day	Thu 5/16/24	Thu 5/16/24																												
17		Mobilization / Baicades	1 day	Mon 7/1/24	Mon 7/1/24																												
18		Demolition	2 days	Tue 7/2/24	Wed 7/3/24																												
19		Frame	1 day	Mon 7/8/24	Mon 7/8/24																												
20		MEP Rough-In	1 day	Tue 7/9/24	Tue 7/9/24																												
21		Hanging	2 days	Wed 7/10/24	Thu 7/11/24																												
22		Finish	2 days	Mon 7/15/24	Tue 7/16/24																												
23		Paint	2 days	Tue 7/16/24	Wed 7/17/24																												
24		Ceiling	2 days	Tue 7/16/24	Wed 7/17/24																												
25		Flooring	2 days	Mon 7/22/24	Tue 7/23/24																												
26		Millwork	2 days	Tue 7/23/24	Wed 7/24/24																												
27		MEP Devices	2 days	Thu 7/25/24	Fri 7/26/24																												
28		Final Clean	1 day	Thu 7/25/24	Thu 7/25/24																												

Project: Project1 Date: Thu 5/16/24	Task		Project Summary		Manual Task		Start-only		Deadline	
	Split		Inactive Task		Duration-only		Finish-only		Progress	
	Milestone		Inactive Milestone		Manual Summary Rollup		External Tasks		Manual Progress	
	Summary		Inactive Summary		Manual Summary		External Milestone			