

CVG Operations Memorandum

To: CVG Airlines' Flight Crews and Maintenance Taxi Personnel

From: Brian Cobb, VP - Customer Experience

Subject: Enhanced Taxi Instructions Related to Apron 2 Remote Parking and Concourse A

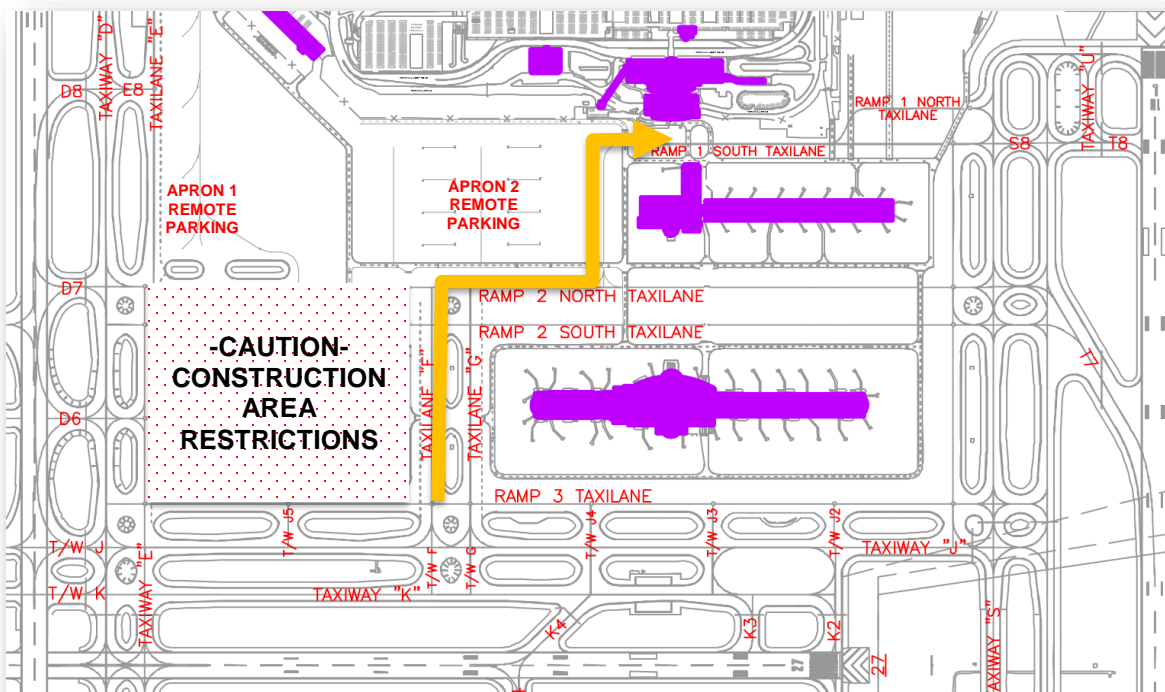
Date: May 18, 2017

Effective **Immediately:**

Enhanced Taxi Instructions

The recent opening of additional remote parking "Apron 2" may be visually mistaken for open area to taxi through, particularly for the Concourse A north, even-numbered gates. Mitigation steps have been taken to remove connecting J-lines that joined the parking lead line. Additionally, Delta Ramp Tower has modified taxi instructions for arriving aircraft to read as follows:

- Enter Spot #10, North on Fox then taxi East on the Ramp #2 North taxi line.
- Use caution not to enter the remote parking area West of Concourse A.
- Taxi North on the Ramp #1 taxi line to your gate.



Aircraft taxiing FROM the North sides of Concourse A would receive the reverse instructions that will include "use caution not to enter the remote parking area West of Concourse A".