



Operations Memorandum

To: CVG Airlines and Tenants

Subject: Updated Concourse B and AGT Expansion Joint Project Estimated Schedule

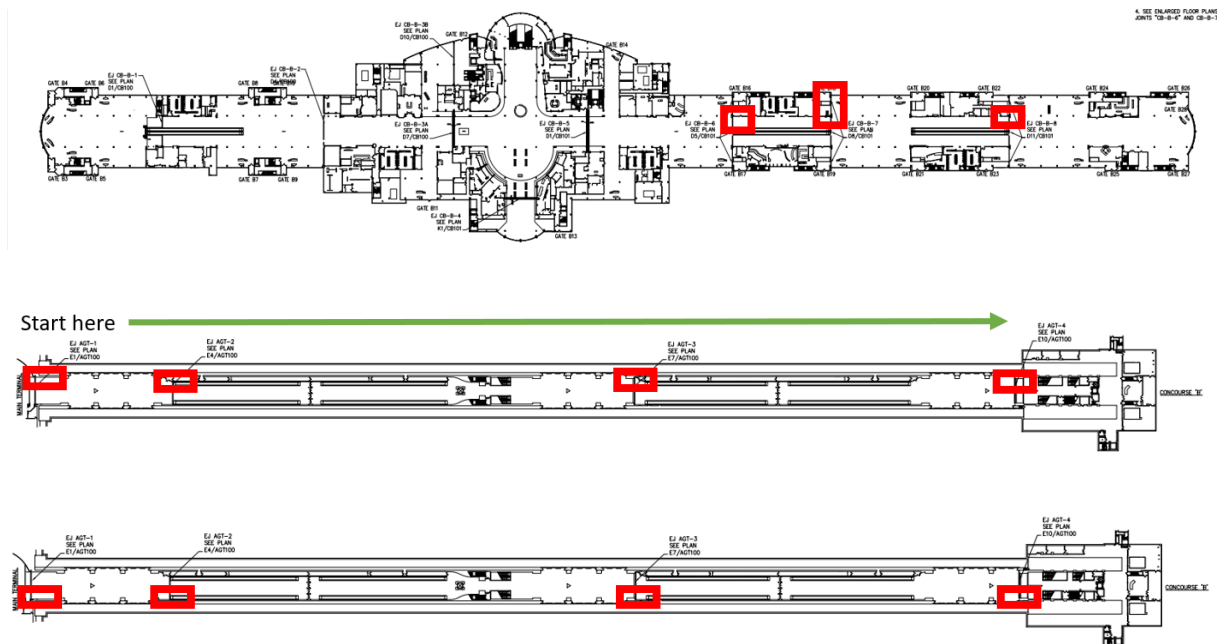
Date: 11/4/2022

Construction continues for the replacement of expansion joints currently in Concourse B and continuing to the AGT starting Monday, November 7th. Due to changes in the initial scheduling and order of the work being performed, we have attached an updated schedule for where work will now occur during each week through the end of the year.

Please note that this order is subject to change as operational impact may necessitate.

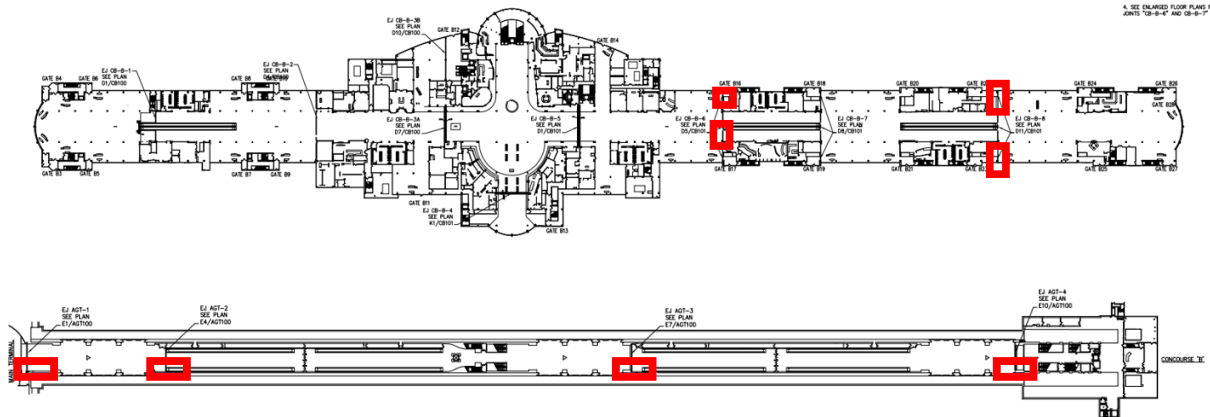
Beginning next week (Week of 11/7):

- **Work begins at Gate B18 Monday morning after 8:00 AM.** We are expected to have this gate back online by the end of Thursday, 11/10.
- **The walkway near Gate B22 will be closed for repair**, but will not affect the operation at the gate. Signage will be in place to redirect passengers.
- **Once B18 is re-opened, the walkway near Gate B16 will be closed for repair.** This will not affect the operation at the gate. Signage will be in place to redirect passengers.
- Work in the tunnel will begin starting on the west of near the Terminal. Work will progress down the west end towards Concourse B.



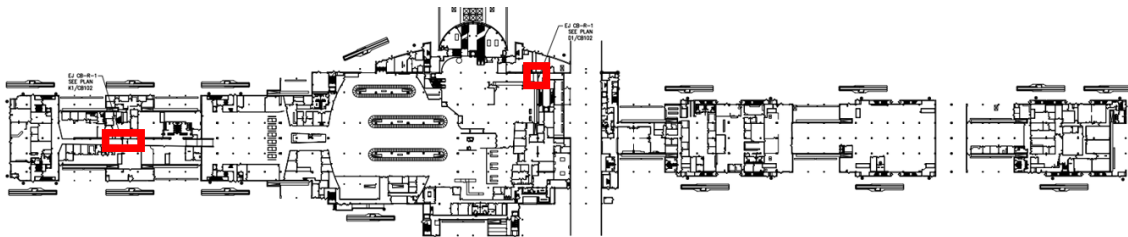
Beginning the following week (Week of 11/14):

- **Work occurs at Gate B23.** No impact to operation due to exterior ramp work.
- **The walkway near Gate B17 will be closed for repair**, but will not affect the operation at the gate. Signage will be in place to redirect passengers.
- **The final threshold at Gate B16 will be worked on, closing the gate for approximately 3-4 days.** Once that work is complete and the gate is re-opened, **Gate B22 will shut down to allow for work at the threshold.**
- Work in the tunnel may continue on the east side if not already completed.



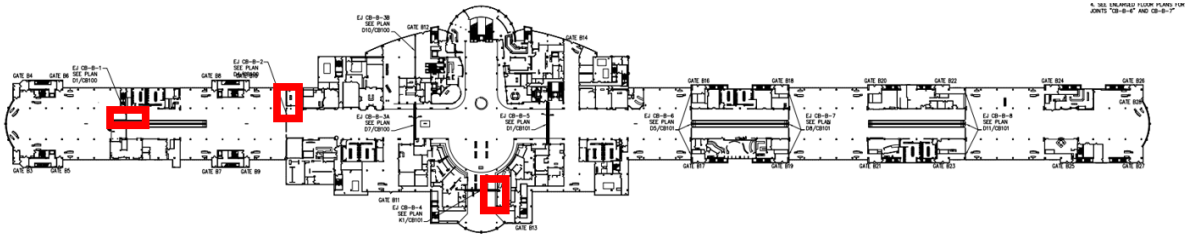
Beginning the week of 11/21:

- **There will be no work performed in the passenger-facing areas of Concourse B or the tunnel. This is to accommodate additional traffic due to the Thanksgiving holiday.**
- The second level of Concourse B will have two expansion joints replaced in the following locations. This will have no operational impact.



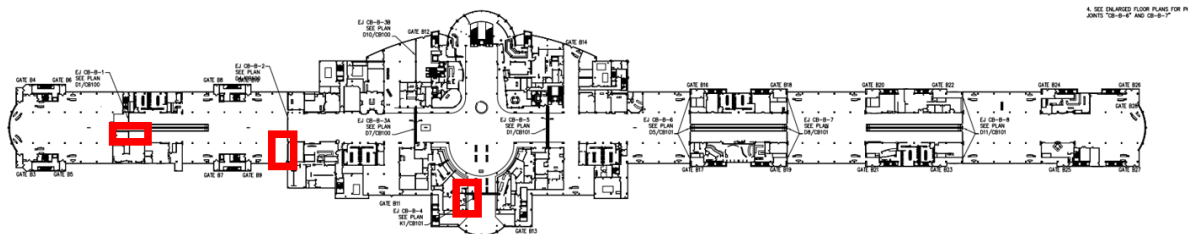
Beginning the week of 11/28:

- Work begins on **the east side of the food court area**. Seating will be moved to accommodate for the barrier in place. No direct impact to concessionaire operations in expected.
- **Work occurs at the edge of the gate area near Gate B10**. Seating will be moved to accommodate the barrier in place. No operational impact to use of this gate.
- **Work occurs near the walkway between Gate B6 and the restrooms on the north side**. No operational impact to use of the gate or restrooms. Signage will be in place to redirect passengers.



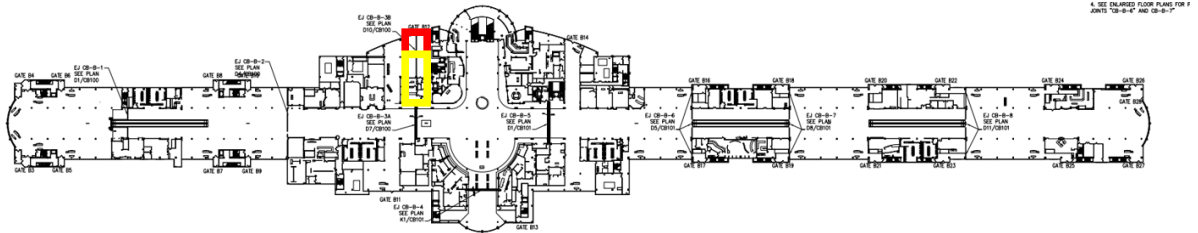
Beginning the week of 12/5:

- **Work begins on the west side of the food court area**. Seating will be moved to accommodate for the barrier in place. No direct impact to concessionaire operations in expected.
- **Work occurs at the edge of the gate area near Gate B9**. Seating will be moved to accommodate the barrier in place. No operational impact to use of this gate.
- **Work occurs near the walkway by Gate B5**. No operational impact to use of the gate. Signage will be in place to redirect passengers.



Beginning the week of 12/12:

- **Work begins at Gate B12.** The initial 2/3 of the joint in the gate area will be worked on beginning Monday, December 12. Barriers will be in place around the work space, and seating will be moved to accommodate the barriers. No operational impact is expected for this work until **Thursday, 12/15. Gate B12 will then be shutdown to complete the final 1/3 of the joint in the gate area.**





Operations Memorandum