



Operations Memorandum

To: CVG Airlines and Tenants

From: Brian Cobb, VP - Customer Experience

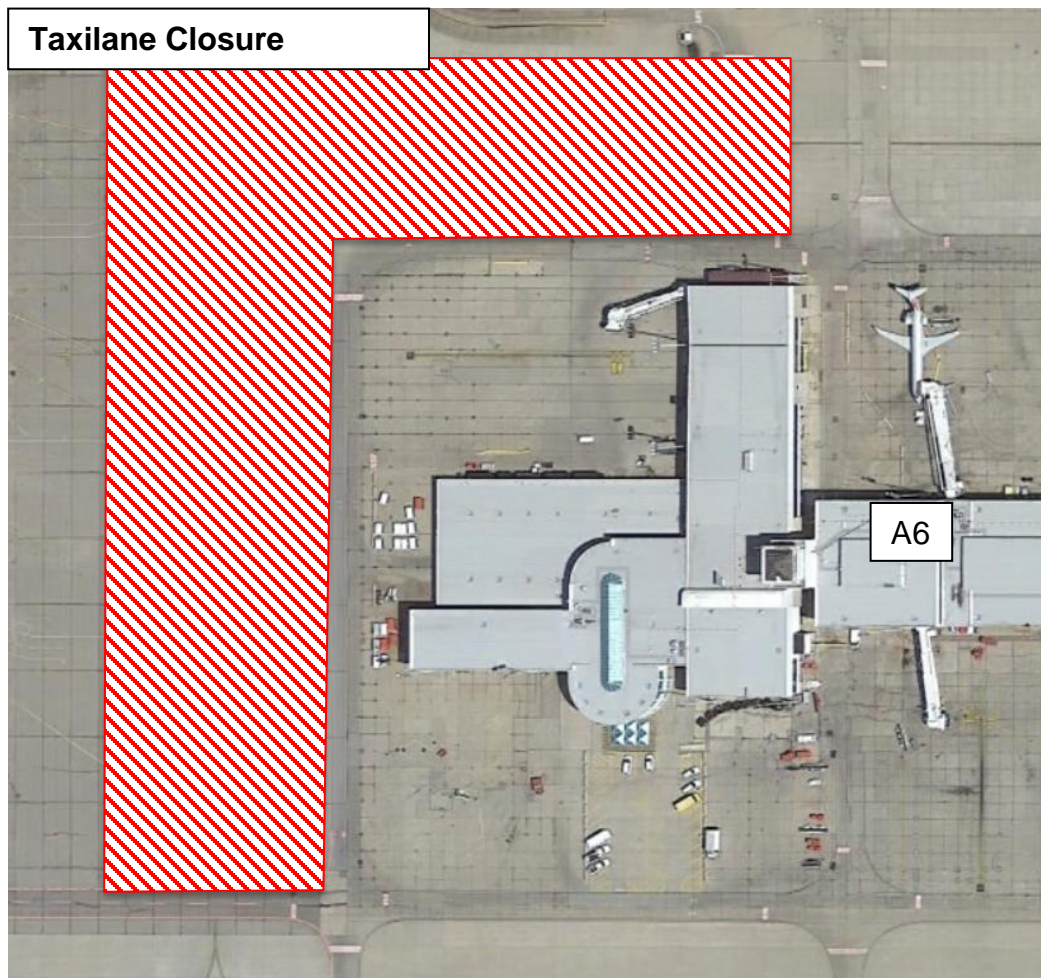
Subject: Concourse A Construction Related Closures

Date: March 24, 2017

Effective **Monday, March 27:**

TAXILANE CLOSURE

Ramp 1 will be closed from west of Gate A6 to Ramp 2N. This area will be barricaded. This closure is anticipated to be in effect between 8:00 am through 5:00 pm. Appropriate NOTAMS will be issued for closure and reopening. The ramp service road will remain open throughout the event.



Effective **Monday, April 3:**

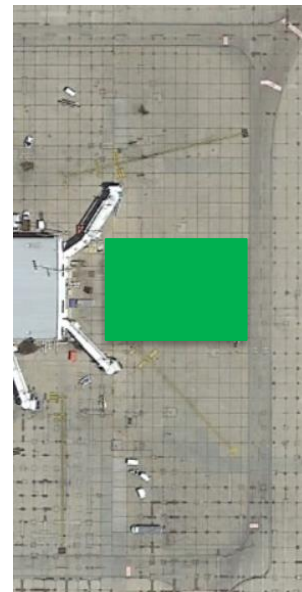
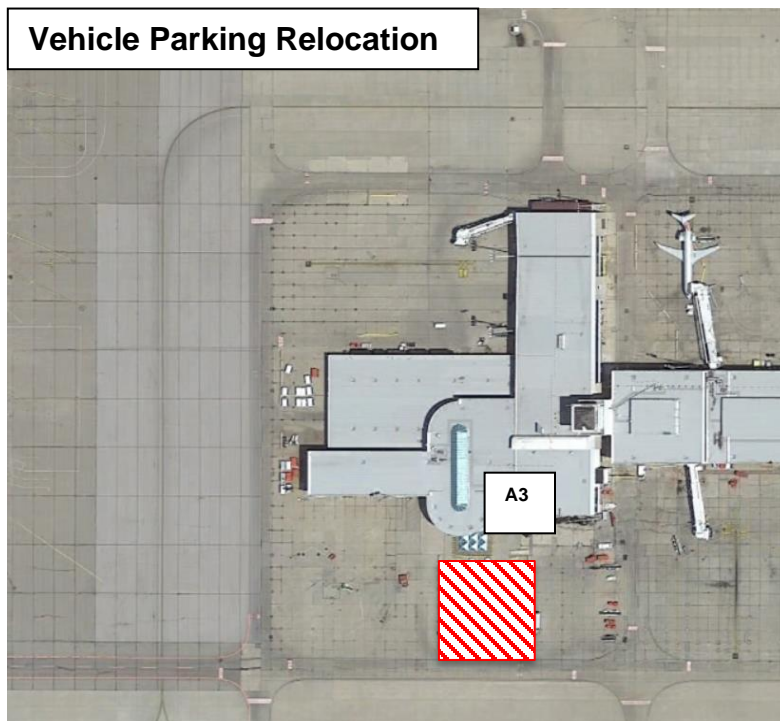
Concourse A Vehicle Parking Changes

The multi-tenant parking lot adjacent to A3 will be closed. The interim parking area will be relocated to the east-end of Concourse A between Gates A21 and A22. Barricades will be placed to indicate the parking area and provide for necessary ramp safety. Personnel may access the Concourse from the adjacent Concourse gate stairwells. Please be mindful of customers in those surrounding gates.

We recognize the challenge this may bring. We remind all ramp driving personnel to use caution when parking and comply with all ramp markings, parking restrictions, and guidance. It is not permissible to drive under bridges or enter aircraft safety zones.

Longer-term and included in the construction plan is new, additional parking located to the west of the Concourse A Bagroom. Additional information will be provided upon completion.

Vehicle Parking Relocation



Effective Monday, April 3:

Concourse A Common Dumpster Area Relocation

The multi-tenant dumpster and recycling containers will be relocated to the Gate A4 areas (depicted below). At the same time, the dumpsters will be replaced with a single compactor to conserve space. Additional guidance will be issued on how to use the compactor.

Users may access this area by using the service elevator near A6 to reach ramp level then transport through the near-by breezeway that joins the A6 and A4 areas.

