

**To:** Airlines and Cargo Operators

**From:** Brian Cobb, VP - Customer Services

**Subject:** North Apron Remote Parking

**Date:** July 7, 2015

Please be advised that the portions of the CVG North Apron Remote Parking will not be available. Parking numbering will subsequently be revised and positions repainted to maximize available space. See below and the attached diagrams for additional guidance and critical effective "AS OF" dates.

Remote 9 (R9)

- Previously closed effective July 1 for construction
- target reopen September; tenant leased

Remote 11 & 13 (R11 & R13)

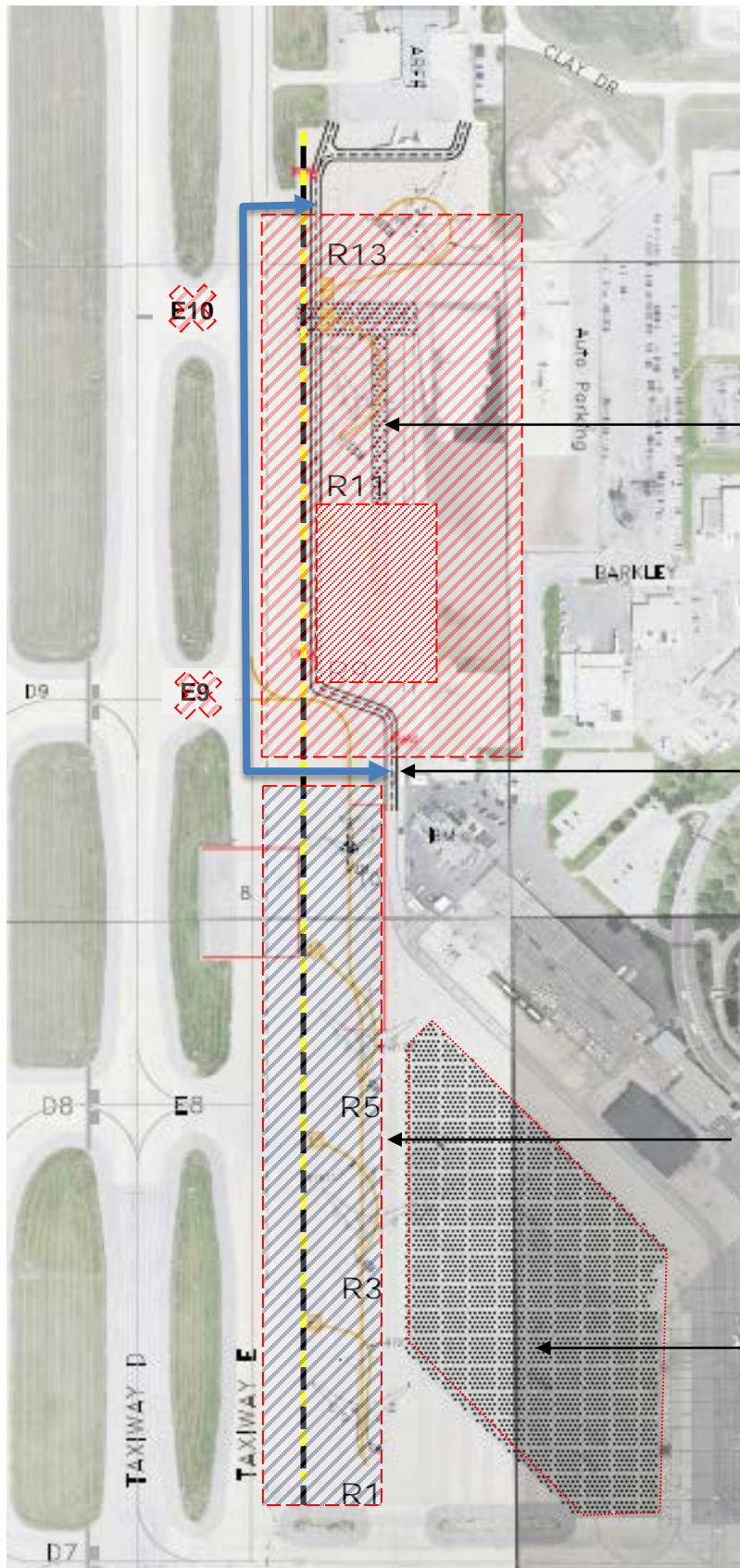
- closed July 8 through July 15 for NASCAR and MLB aircraft staging
- closed July 15 through October for construction

Echo 9 & 10

- closed July 15 through October for construction

**Remaining space will be limited and will continue on first-come first-serve basis.** Please contact Brian Cobb, [bcobb@cvgairport.com](mailto:bcobb@cvgairport.com) should you need additional information. Cargo operators are reminded that:

- o CVG Airport staff must be notified and approve an assignment prior to aircraft positioning. Contact information remains as before [Brian Cobb – primary, Airport PD – secondary]
- o Yellow/Black dashed line indicates Object Free Area (OFA); wingtips must remain clear, West of the line.
- Aircraft must remain clear of active taxi and roadways
- Daily fees apply
- Operator responsible for safety precautions and aircraft access (i.e. cones, FOD walks)  
Operator must remove and stow any safety and access equipment when not in use (chocks, cones, stairs)



**R9 CLOSED**  
Jul 1 - September

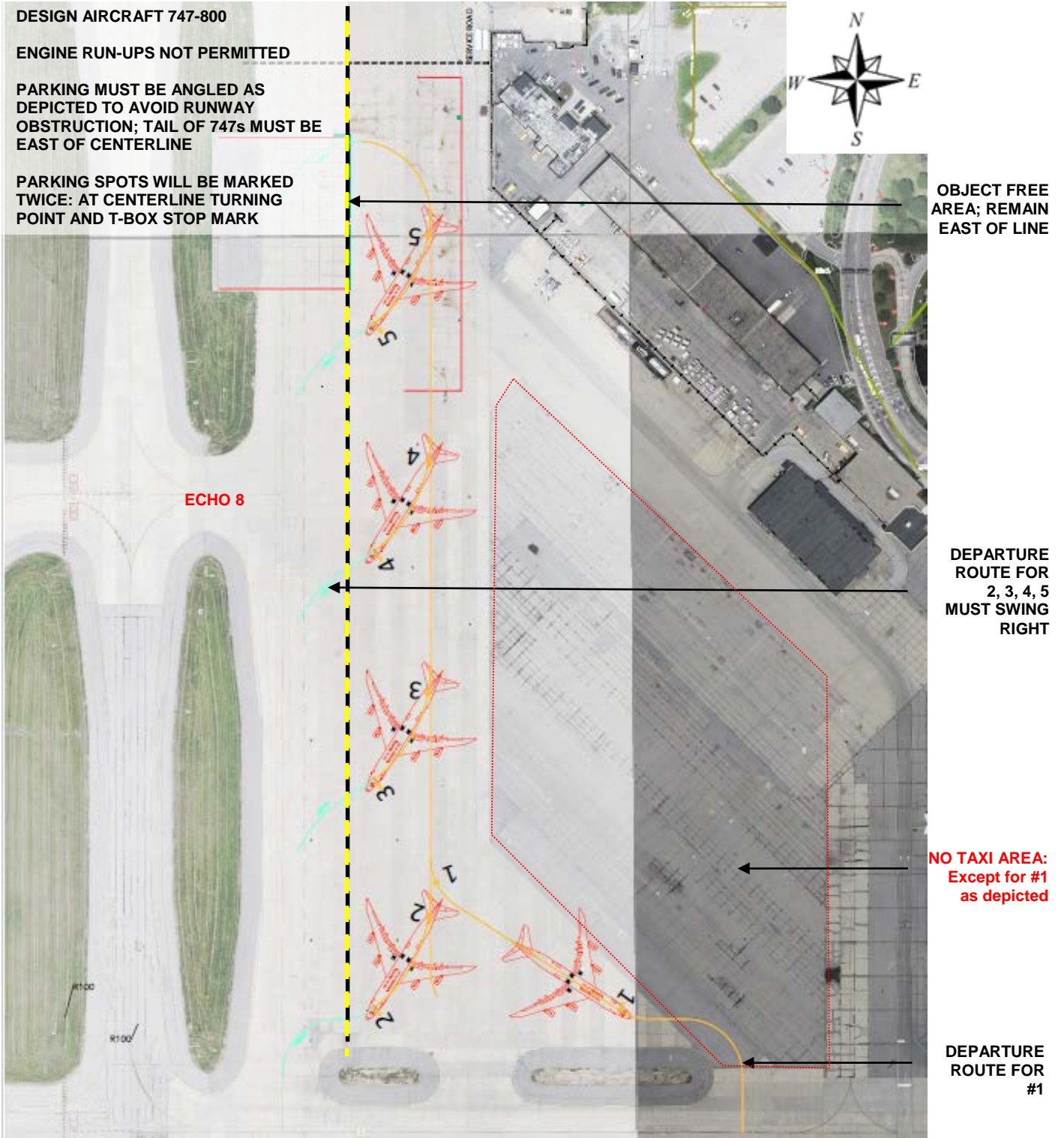
**R11, 13 & ECHO 9 & 10  
CLOSED**  
July 8 – October

**\*R11 & 13 AREA TO BE  
USED FOR NASCAR AND  
MLB**  
July 8 – July 15

**ALTERNATE SERVICE  
ROAD PATH AROUND  
CONSTRUCTION ZONE**

**R1, 3, 5 MARKINGS TO  
BE REMOVED AND  
REPLACED; SEE PAGE 3**

**NO TAXI AREA**



**NOTE: ARRIVAL SEQUENCE (to maximize available parking)**

**1, 5, 2, 3, 4**

**Enter Echo 8 and  
intersect taxi line:  
1, 2, 3**

**Enter Echo 8 and taxi North  
for teardrop approach:  
4, 5**